



BaltCICA 2009-2012
**Climate Change: Impacts, Costs and
Adaptation in the Baltic Sea Region**

Laila Kūle, Agrita Briede - University of Latvia



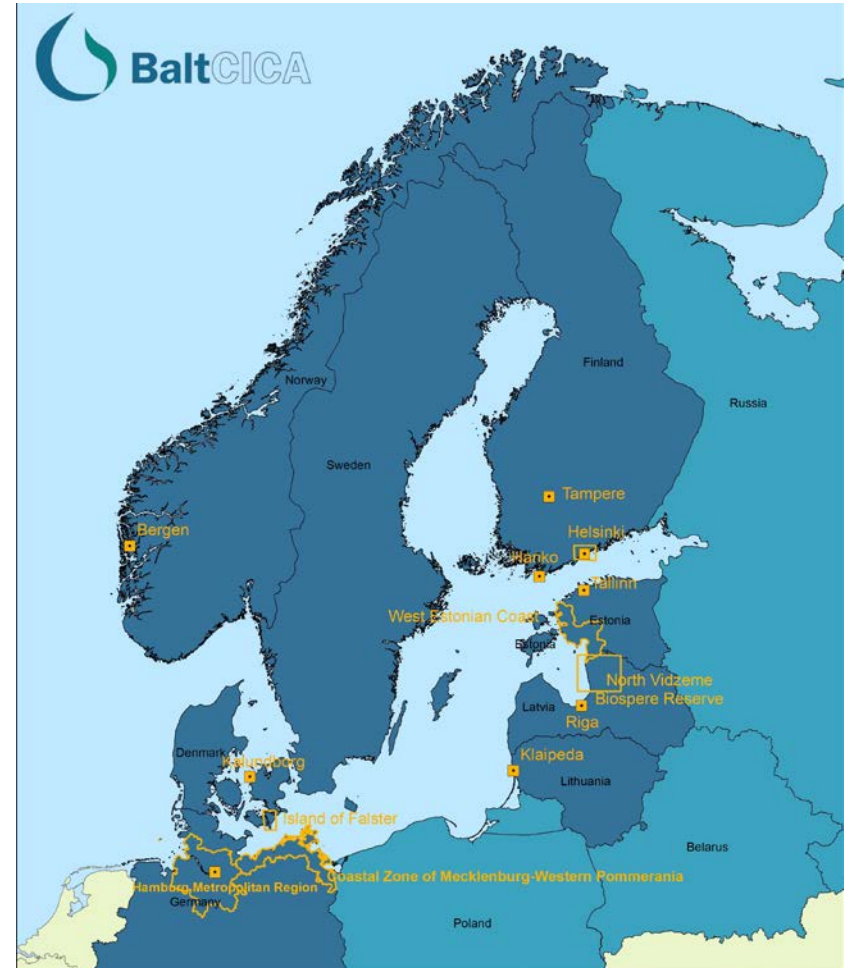
Baltic Sea Region
Programme 2007-2013

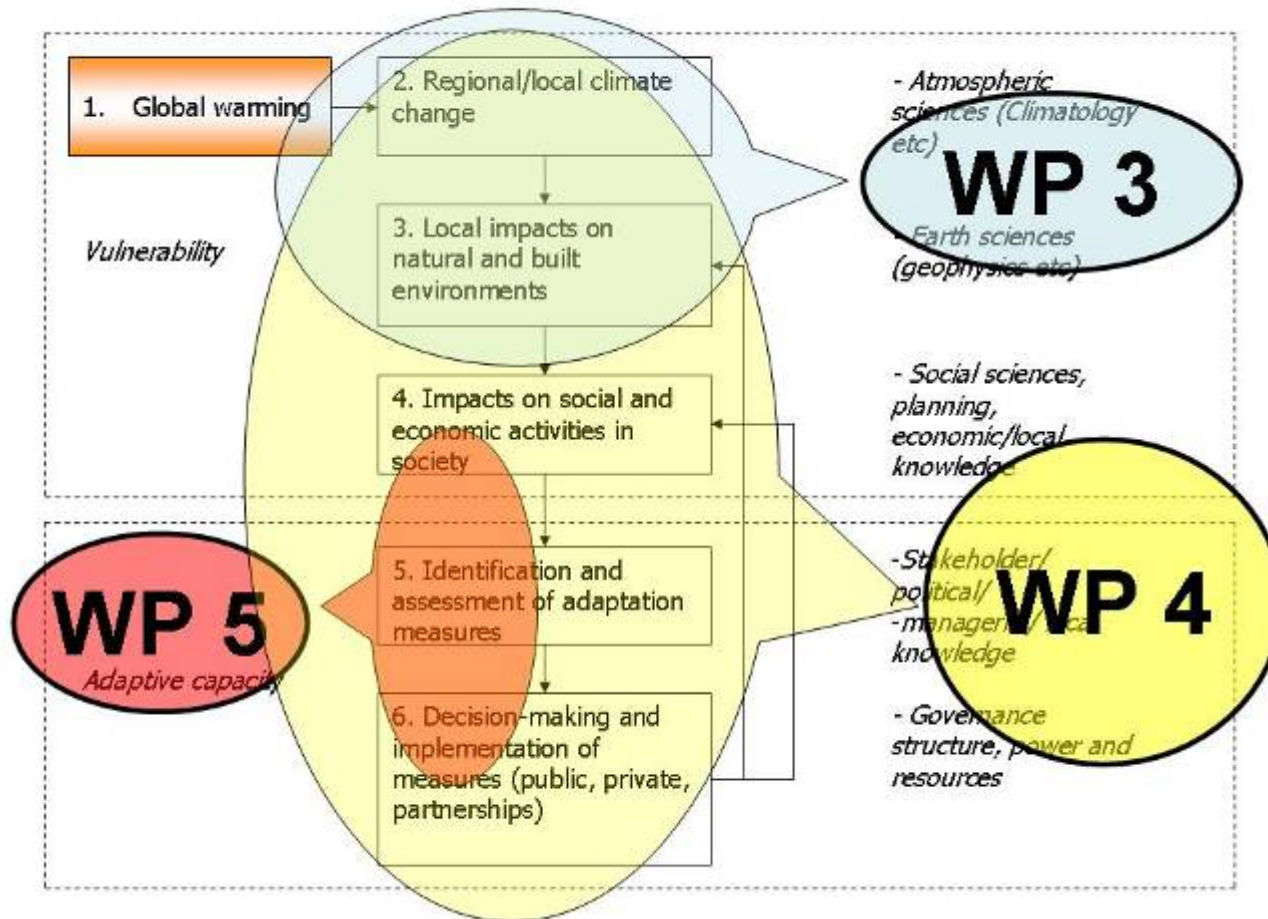
Part-financed by the European Union (European Regional Development Fund and European Neighbourhood and Partnership Instrument.)



The BaltCICA Project focus on

- Larger **cities** and coastal areas that are especially sensitive to climate change.
- Assessment of **climate change impacts**, particularly water availability and quality.
- Development of a **process management concept** and **governance approaches**, including stakeholder involvement, assessment of the costs of rising sea levels and increased flood risks on a pan-Baltic level, testing of multi-criteria cost-benefits analyses of climate change adaptation options
- Development of concrete climate change **adaptation measures** in close cooperation between regions or municipalities.





24 partners from 8 countries: Regional and local administration, municipalities, nature reserves, research institutes of different disciplines and universities

- **Geological Survey of Finland (GTK, lead partner)**
- **Helsinki University of Technology Centre for Urban and Regional Studies**
- **Hanko Water and Wastewater Works**
- **Union of the Baltic Cities Commission on Environment (UBC)**
- **Helsinki Metropolitan Area Council**
- **City of Helsinki**
- **City of Tampere**
- **Geological Survey of Estonia (EGK)**
- **University of Latvia**
- **North Vidzeme Biosphere Reserve**
- **Municipality of Klaipeda**
- **Municipality of the Klaipeda district**
- **Vilnius University**
- **Environmental Centre for Administration and Technology, Lithuania (ECAT)**
- **Lithuanian Geological Survey**
- **Kalundborg Municipality**
- **Danish Board of Technology**
- **Geological Survey of Denmark and Greenland Nordic Centre for Spatial Development (Nordregio)**
- **Norwegian Institute for Urban and Region Research (NIBR)**
- **Leibniz Institute for Baltic Sea Research Warnemünde (IOW)**
- **HafenCity University/Institute for Urban-, Regional- and Environmental Planning (HCU)**
- **EUCC – The Coastal Union Germany**
- **Potsdam Institute for Climate Impact Research - PIK**



BaltCICA Project 2009-2012 outputs from Latvian partners

- Assessment of climate change impacts in Latvia context
- Supporting testing methods and approaches of assessment of climate change adaptation measures
- Contribution to work on national level adaptation strategy in Latvia
- Information distribution activities on climate change adaptation aspects
- Involvement of local stakeholder and contribution to the local policy preparation in the field of the climate change adaptation and linked policy fields (water management, planning and building, etc)
- Instructive support for the Information–Exhibition centre at the premises of Biosphere Reserve Reserve’s Administration



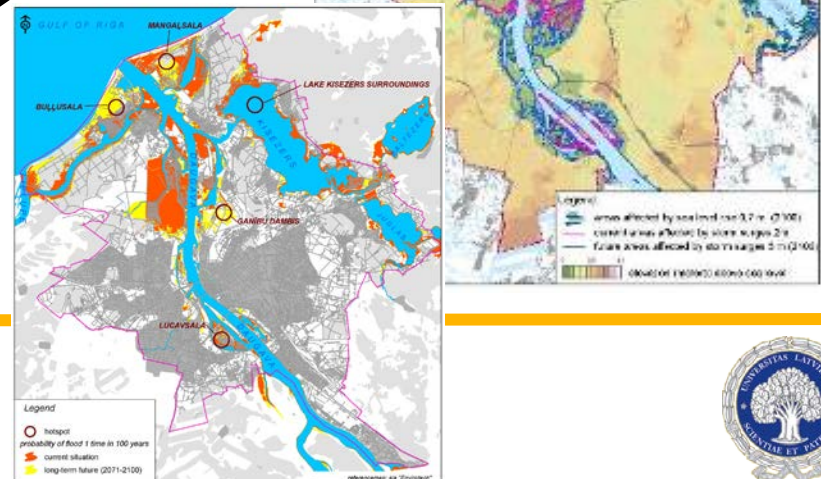
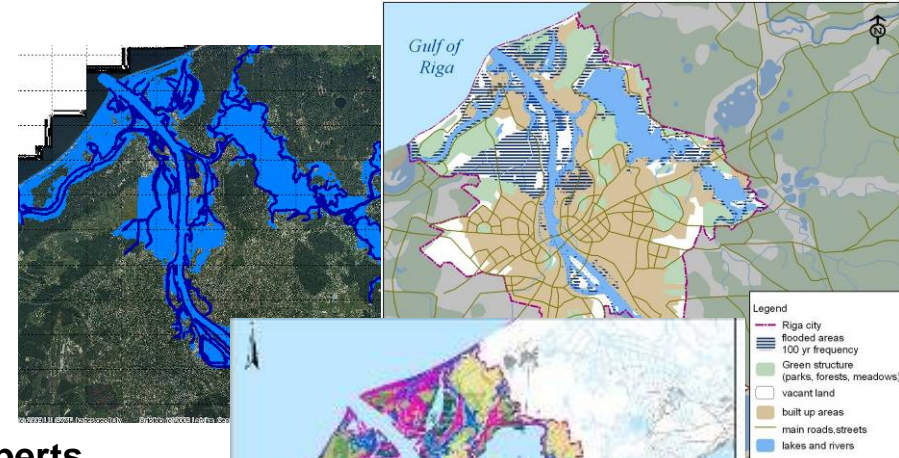
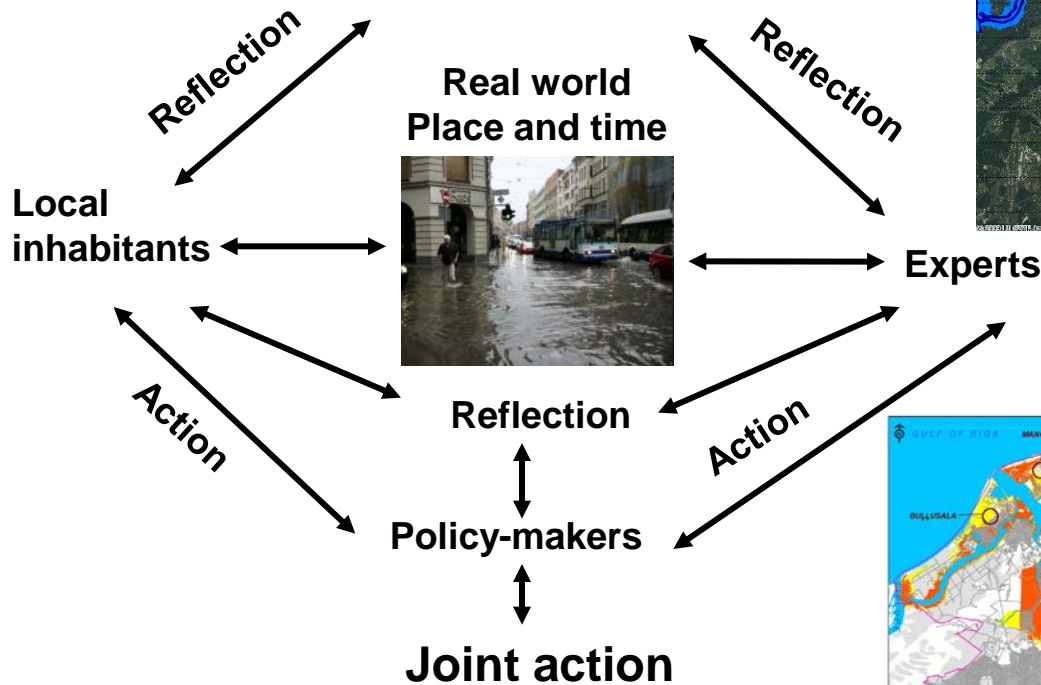
Climate Change adaptation in the Salacgriva municipality

- Prepared CC Adaptation Strategy for the Salacgriva Municipality
- Raise of awareness, motivation, practical involvement.
- Lectures and practical activities in all schools along the 50 km of the Eastern stretch of the Gulf of Rīga

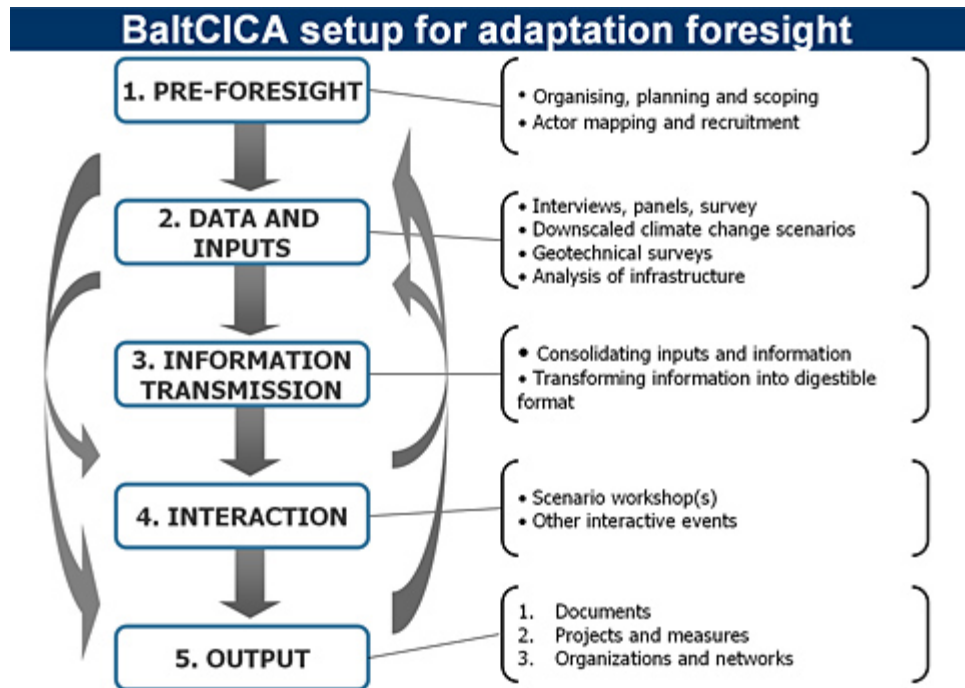


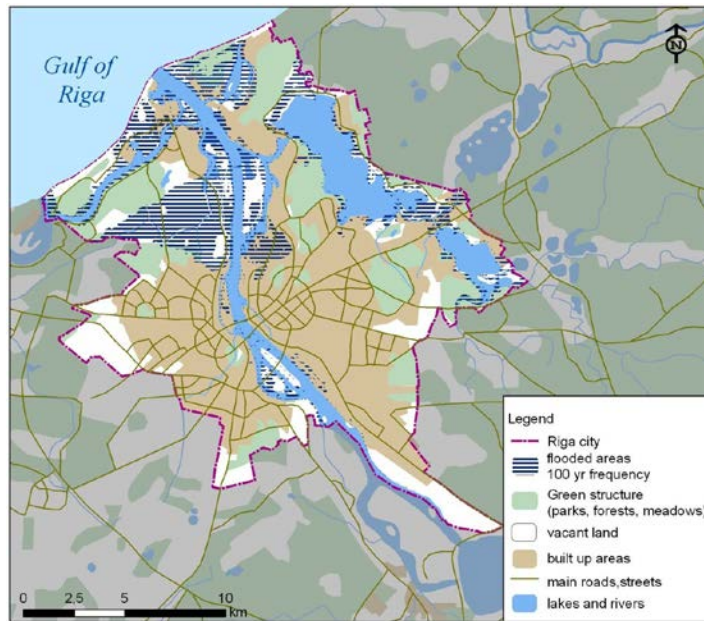
Climate change adaptation is located between science, practice, communication, learning, policy-making and policy-transfer

Data, models, scenarios, impact analysis, GIS, etc



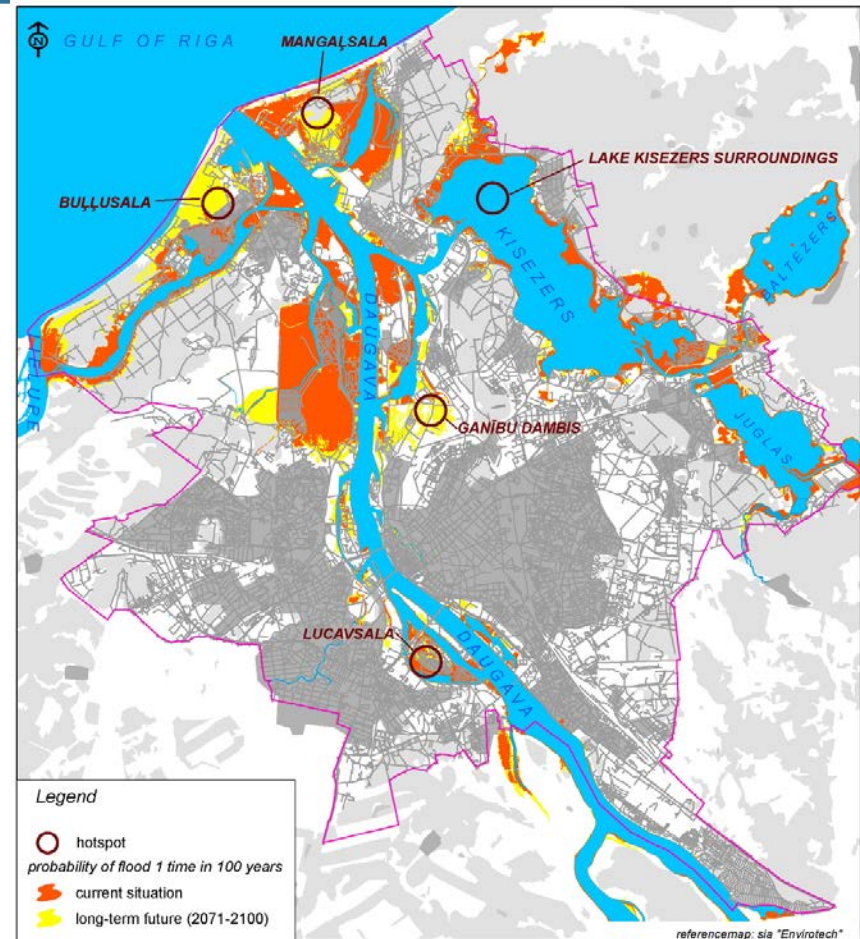
Common conceptual framework is applied to aid the processes in 13 participating cities and regions





ASTRA Project results, 2007

*New data,
new knowledge,
new interpretation*



- Data and map prepared by the municipality of the Riga City as a result of Life+ project and in cooperation with BaltCICA project, 2011 (multi-criteria analysis)



Part-financed by the European Union (European Regional Development Fund and European Neighbourhood and Partnership Instrument.)



Thank you for attention!

Laila Kūle, Agrita Briede, Ieva Bruņeniece, Māris Kļaviņš
Faculty of Geography and Earth Sciences, University of Latvia, Riga
e-mail: laila.kule@lu.lv
e-pasts: agrita.briede@lu.lv

www.baltcica.org

